

## Components

for pumps, piping systems, vessels, chemical equipment, valves – made of corrosion- and abrasion-resistant materials such as PTFE virgin, PTFE-T (modified), PTFE-AS (conductive), PFA, PFA-AS (conductive), PFA-HP (high-purity), PVDF, PP, ETFE or UHMWPE.



**Expansion Joint**  
SS304/PTFE



**Dip Pipe**  
SS316L/PTFE

## Applications

- Heavy-duty PTFE expansion joints, reducing flanges
- Dip pipes, suction hoses for vessels or reactors
- Bodies for diaphragm valves, sight glasses, ball check valves, sampling valves
- Couplings, flow measuring tubes
- Valve- and pressure gauge diaphragms
- Solid or hollow balls, balls mit metal insert
- Tubes, rods, profiles, bars, plates
- customer-driven parts

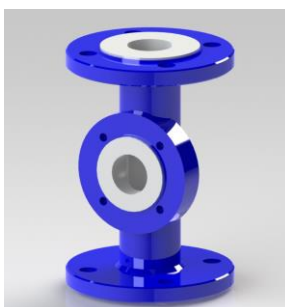
## Quality

In order to assure a high quality standard on linings or molded parts, only virgin fluoropolymer materials are used in our production processes (no re-generated or re-worked materials).

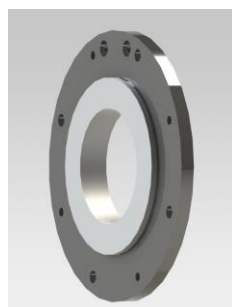
On lined components the plastomeric material is anchored into grooves at several points of the metallic part. This proven system allows to apply such components even under vacuum conditions.

**Conformity according to European Pressure Equipment Directive 2014/68/EU (PED)**

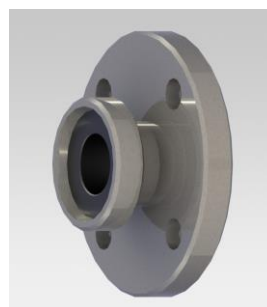
## Examples



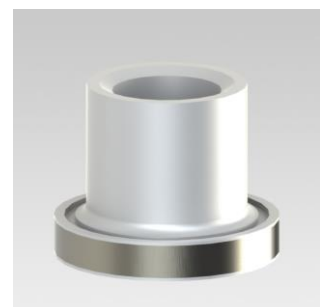
**Tee-Piece special**  
C.St epoxy/PFA-lined



**Flange**  
SS316L/PFA-lined



**Transition Piece**  
SS316L/PFA-AS-lined



**Discharge Nozzle**  
SS316L/PFA-lined